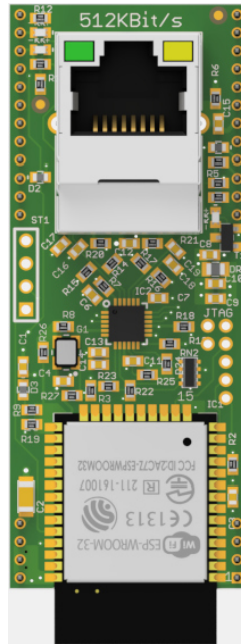


# CAI\_LanWlan-SOC-IA-01



## 1.1 Description

With this module, a corresponding IMACS host board (e.g. CPU board) can be expanded to include a WLAN interface and an Ethernet connection, thus establishing a data connection with other systems such as a visualization PC.

The module firmware determines in which operating mode the module is operated, i.e. whether it functions as a transparent network interface for WLAN and Ethernet or only as a bridge for RS232.

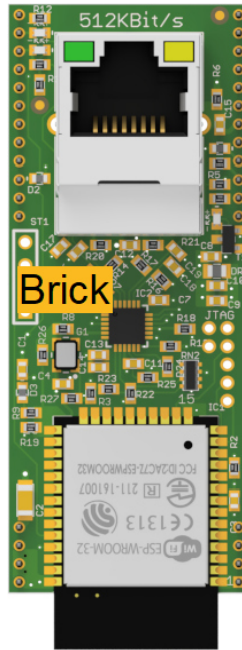
The ESP32-wroom-32D product from Espressif Systems is used here.

See also:

[https://www.espressif.com/sites/default/files/documentation/esp32-wroom-32d\\_esp32-wroom-32u\\_datasheet\\_en.pdf](https://www.espressif.com/sites/default/files/documentation/esp32-wroom-32d_esp32-wroom-32u_datasheet_en.pdf)

The speed of the Ethernet interface is internally limited to about 512Kbit/s, even if it is externally signaled as 10 Mbit/s.

## 1.2 Connectors and Indication-/Operation-Elements



## 1.3 Input-/Output Scheme

The following diagram shows the adaption of the control unit. To avoid overlapping, some wires are displayed interrupted and dashed.

no DocCompAdapt available

## 1.4 Technical Data

### 1.4.1 User Notes

- Blinking behavior StateLED:  
Each Morse code is 3 seconds long!  
not initialized = flashing continuously at approx. 5Hz  
no communication = short-long-short  
too little communication = short-short-short  
disturbed communication = short-long-long  
OK = continuous flashing at approx. 1Hz (0.6-1.5Hz)

## 1.5 History

On the following page you will find a list of changes that have been made to the product.

1.5.1 History

Date	Entry scope (HW, SWappl, SWapi, Release)	Entry type (enhancement, improvement, bugfix, release)	Version	Status (development, implemented, tested)	Responsible	Reason for the modification	Items of modification	Impact for (end-)customer	Comment	Location in model/source
xxxx-xx-xx		Release	0.99	Tested	NSt					

For questions please contact:

emBrick GmbH	Alfred-Nobel-Straße 2 D-55411 Bingen am Rhein	+49 (0)6721-48035-70	<a href="https://www.embrick.de/">https://www.embrick.de/</a> <a href="https://www.embrick.de/shop/">https://www.embrick.de/shop/</a> <a href="mailto:support@embrick.de">support@embrick.de</a>
--------------	--	----------------------	--