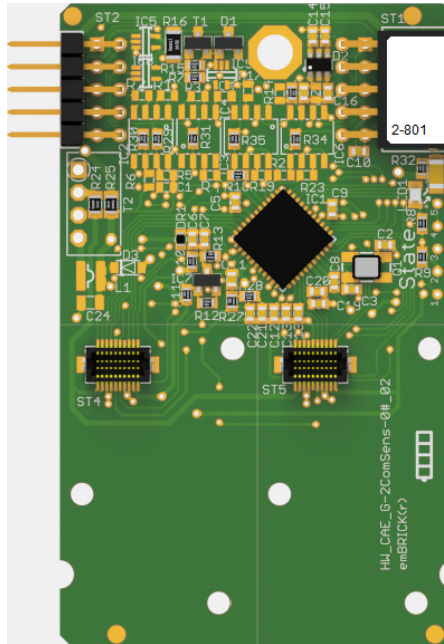


# CAE\_G-2ComSens-01



## 1.1 Description

ID: 2-801

Order No.: CAE\_G-2ComSens-01

Terminal: SubBrick Connector

Size: 4 eU (44mm x 72mm)

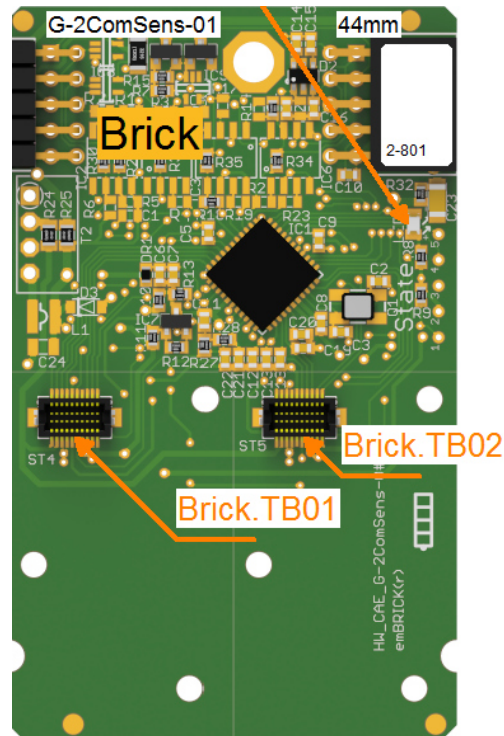
BBFCP: 1-1-1

Weight: 40g

This is a multi-purpose module for many sensors and communication interfaces. The sensor and communication interfaces are on Subbricks. Up to two Subbricks can be connected to the Slave. As an interface for the Subbricks there's a connector on the main PCB (Subbrick Connector 1/2). Multiple serial interfaces, digital in-/outputs and analog inputs are available over this connector.

The module version 2-811 is electrically isolated, while version 2-801 is electrically connected.

## 1.2 Connectors and Indication-/Operation-Elements



### 1.2.1 Terminal block (TB)

The following illustration the technical details for Terminal blocks are listed. The location of a specific block is documented with the ID (left column) in the previous illustrations.

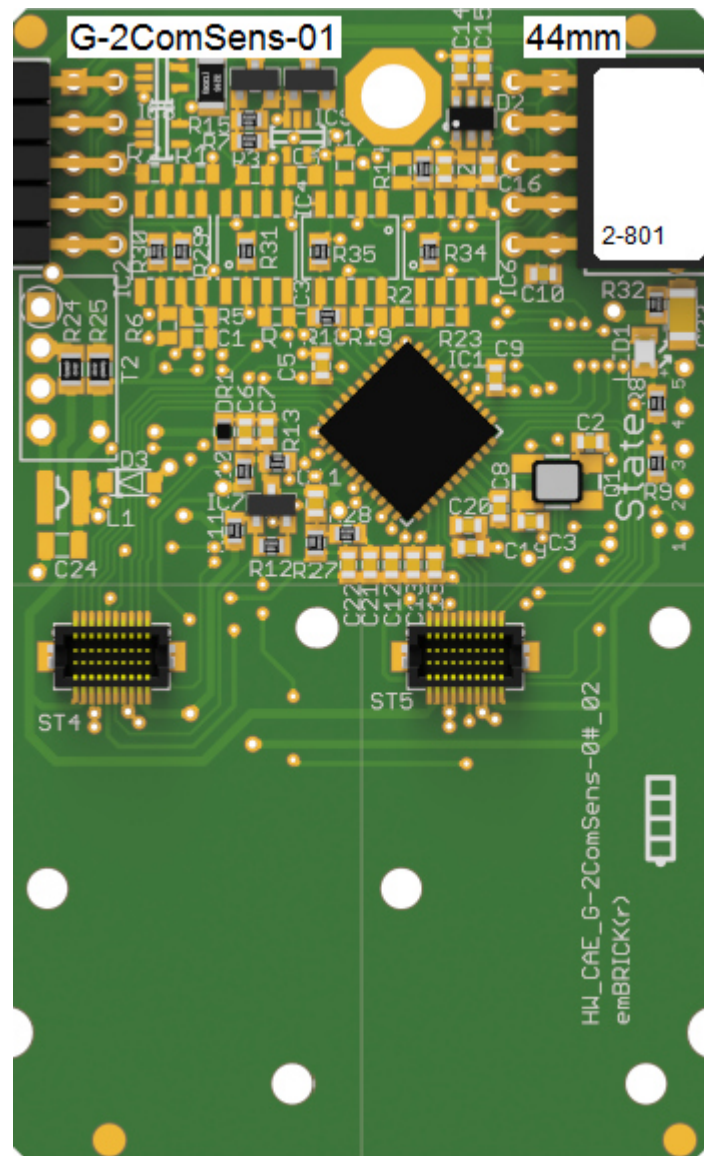
ID	Model	Model / Series	Grid	Num. of term.	connection	elec. usage
Brick.TB1	BTB-Connector	Subbrick Connector	0.5mm	(20)	Plug	
Brick.TB2	BTB-Connector	Subbrick Connector	0.5mm	(20)	Plug	

### 1.2.2 LED Indications

ID	Type	Specification	Type / Usage
Brick.StateLED	SMD-LED	yellow	communicationstate Brick

### 1.3 Input-/Output Scheme

The following diagram shows the adaption of the control unit. To avoid overlapping, some wires are displayed interrupted and dashed.



## 1.4 Technical Data

### 1.4.1 User Notes

- Blinking behavior StateLED:  
Each Morse code is 3 seconds long!  
not initialized = flashing continuously at approx. 5Hz  
no communication = short-long-short  
too little communication = short-short-short  
disturbed communication = short-long-long  
OK = continuous flashing at approx. 1Hz (0.6-1.5Hz)

## 1.5 History

On the following page you will find a list of changes that have been made to the product.

### 1.5.1 History

Date	Entry scope (HW, SWappl, SWapi, Release)	Entry type (Enhancement, Improvement, Bugfix, Release)	Version	Status (development, implemented, tested)	Responsible	Reason for the modification	Items of the modification	Impact for (end-)customer	Comment	location in model/source
xxxx-xx-xx		Release	0.99	tested	NSt					

For questions please contact:

emBrick GmbH	Alfred-Nobel-Straße 2 D-55411 Bingen am Rhein	+49 (0)6721-48035-70	<a href="https://www.embrick.de/">https://www.embrick.de/</a> <a href="https://www.embrick.de/shop/support@embrick.de">https://www.embrick.de/shop/ support@embrick.de</a>
--------------	--	----------------------	---