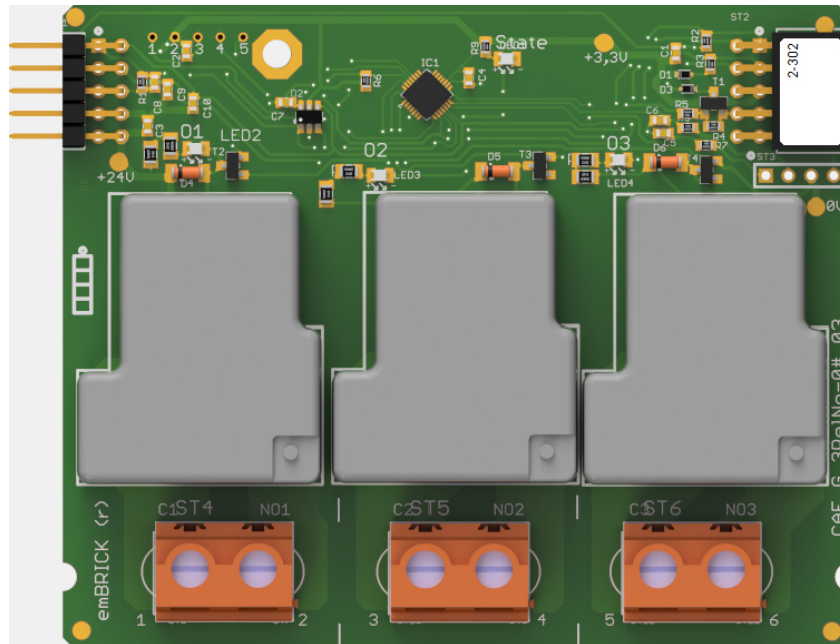


CAE_G-3RelNo-01



1.1 Description

ID: 2-302

Order No.: CAE_G-3RelNo-01

Terminal: Screw usable with one litz wire from 0.5 –6 mm² or AMP

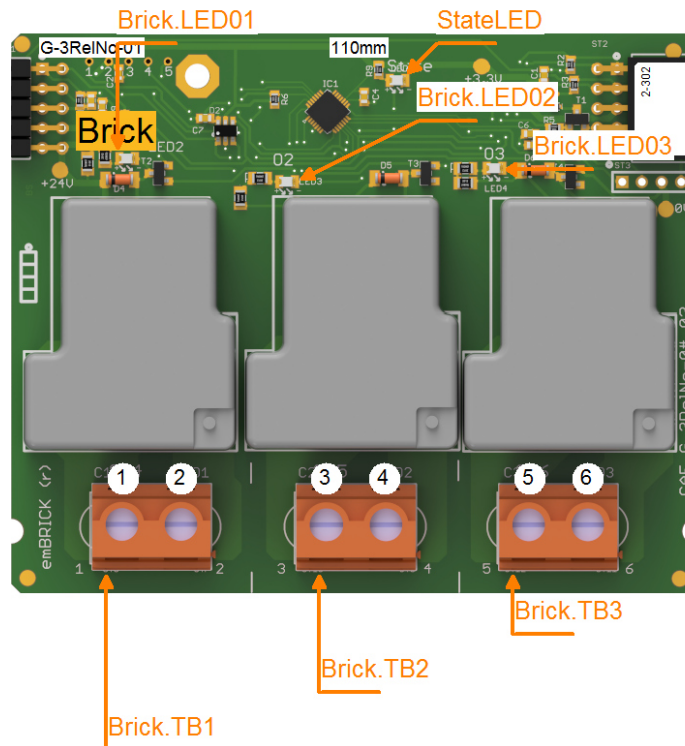
Size: 10 eU (110mm x 72mm)

BBFCP: 1-1-1

Weight: 100g

This module includes 3 isolated Relays. All three are closing contacts.
It is useable as a power connector.

1.2 Connectors and Indication-/Operation-Elements



1.2.1 Terminal block (TB)

The following illustration the technical details for Terminal blocks are listed. The location of a specific block is documented with the ID (left column) in the previous illustration.

ID	Model	Model / Series	Grid	Num. of term.	connection	elec. usage
Brick.TB01	Screw Terminal	Weidmueller	7,62mm	2	up to 6 mm ²	signal level
Brick.TB02	Screw Terminal	Weidmueller	7,62mm	2	up to 6 mm ²	signal level
Brick.TB03	Screw Terminal	Weidmueller	7,62mm	2	up to 6 mm ²	signal level

1.2.2 Terminal assignment

Here the assignment of individual terminals and their affiliation to terminal blocks (Te block), terminal numbers (Te no.) and short description (T.desc.) as well as their electrical function and usage are explained.

The associated mechanical and electrical properties are stated with the specific terminal block in the previous chapter. The position of a terminal is dedicated through the "Te block" and the actual terminal number (Te no.) or the terminal description (T.desc.) in the previous illustration respectively.

In the column "usage" the technical-/ device-functional use is listed.

Te block	Te no.	T. descr.	Function	Usage
----------	--------	-----------	----------	-------

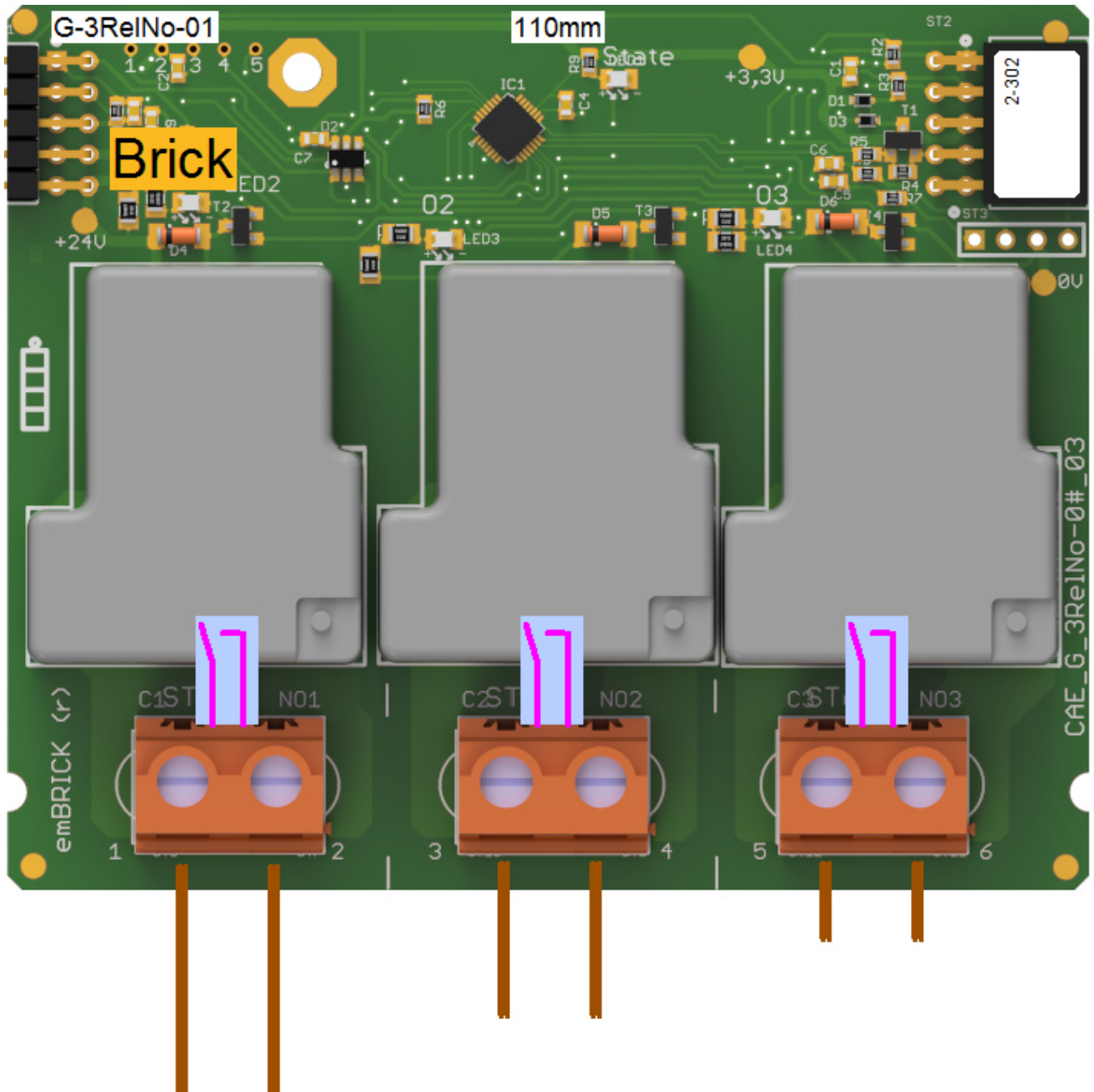
0	0	NO	Relay, normally open contact, isolated	Rel1
1	2	NO	Relay, normally open contact, isolated	Rel2
2	4	NO	Relay, normally open contact, isolated	Rel3
Brick.TB01	1	C	Relay, change over contact, isolated	Rel1
Brick.TB02	3	C	Relay, change over contact, isolated	Rel2
Brick.TB03	5	C	Relay, change over contact, isolated	Rel3

1.2.3 LED Indications

ID	Type	Specification	Type / Usage
Brick.StateLED	SMD-LED	yellow	communicationstate Brick

1.3 Input-/Output Scheme

The following diagram shows the adaption of the control unit. To avoid overlapping, some wires are displayed interrupted and dashed.



1.4 Technical Data

1.4.1 Digital Outputs

The control unit has the following digital outputs / switching outputs:

Identifier	Rel1
Type	Relay, normally open contact, isolated
max. Switching Volt.	250V AC
max. Switching Cur.	16A AC, 30A Contact
max. Perm. Current	16A AC
nom. Cycles	see datasheet
Component	Potter&Brumfield, T9AS1D
Remark	

Identifier	Rel2
Type	Relay, normally open contact, isolated
max. Switching Volt.	250V AC
max. Switching Cur.	16A AC, 30A Contact
max. Perm. Current	16A AC
nom. Cycles	see datasheet
Component	Potter&Brumfield, T9AS1D
Remark	

Identifier	Rel3
Type	Relay, normally open contact, isolated
max. Switching Volt.	250V AC
max. Switching Cur.	16A AC, 30A Contact
max. Perm. Current	16A AC
nom. Cycles	see datasheet
Component	Potter&Brumfield, T9AS1D
Remark	

1.4.2 User Notes

- Blinking behavior StateLED:
 Each Morse code is 3 seconds long!
 not initialized = flashing continuously at approx. 5Hz
 no communication = short-long-short
 too little communication = short-short-short
 disturbed communication = short-long-long
 OK = continuous flashing at approx. 1Hz (0.6-1.5Hz)

1.5 History

On the following page you will find a list of changes that have been made to the product.

1.5.1 History

Date	Entry scope (HW, SWappl, SWapi, Release)	Entry type (Enhancement, Improvement, Bugfix, Release)	Version	Status (development, implemented, tested)	Responsible	Reason for the modification	Items of the modification	Impact for (end-)customer	Comment	location in model/source
xxxx-xx-xx		Release	0.99	tested	NSt					

For questions please contact:

emBrick GmbH	Alfred-Nobel-Straße 2 D-55411 Bingen am Rhein	+49 (0)6721-48035-70	https://www.embrick.de/ https://www.embrick.de/shop/ support@embrick.de
--------------	--------------------------------------------------	----------------------	--------------------------------------------------------------------------------------------------------------------------------------------------------------------------------------------------------