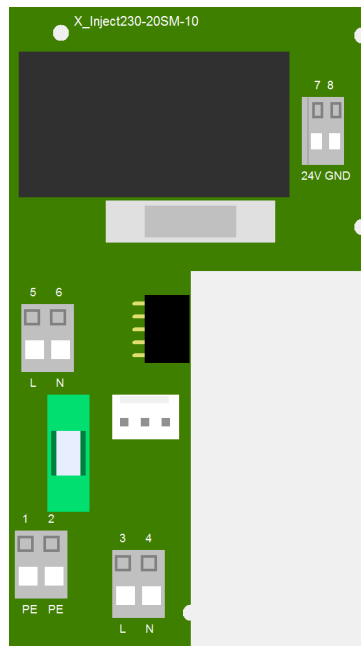


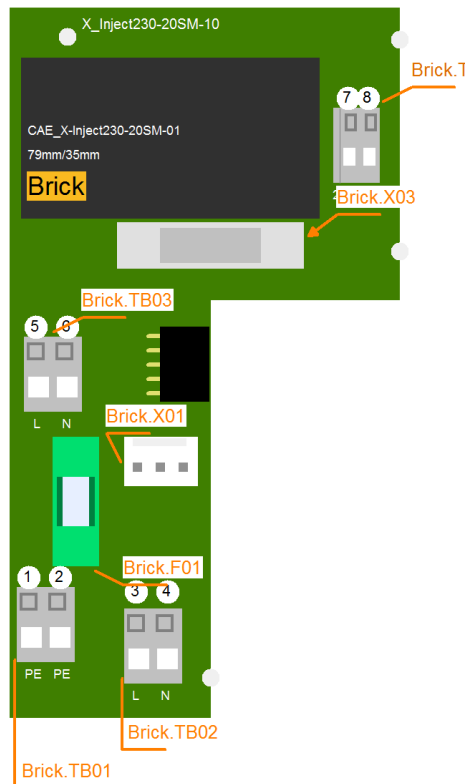
CAE_X-Inject230-20SM-01



1.1 Description

The module X-Inject230-20SM-01 is a switched power supply, it provides 24V and 3,3V to the emBRICK modules. The 24V can be used for small actors over a push-in connection. An external actuator can be supplied with 230V and special emBRICK modules with 230V. Optional a main switch can be connected.

1.2 Connectors and Indication-/Operation-Elements



1.2.1 Connectors (X)

Hereinafter the necessary connections, connectors and their specification for operation are listed. The location of a specific connector is documented with the ID (left column) in the previous illustrations.

ID	Model	Usage	Num. of term.	Model / Series	connection	elec. usage
Brick.X01	Print Connector	3.96mm	3	MTA-156	-	275V / 6A AC
Brick.X02	Box connector	emBRICK I/O-Bus	10		-	brickBUS slave

1.2.2 Terminal block (TB)

The following illustration the technical details for Terminal blocks are listed. The location of a specific block is documented with the ID (left column) in the previous illustrations.

ID	Model	Model / Series	Grid	Num. of term.	connection	elec. usage
Brick.TB01	Cage Terminal	WAGO250	5mm	2	up to 1.5mm ²	PE
Brick.TB02	Cage Terminal	WAGO250	5mm	2	up to 1.5mm ²	250V, 8A
Brick.TB03	Cage Terminal	WAGO250	5mm	2	up to 1.5mm ²	250V, 8A
Brick.TB04	Cage Terminal	WAGO250	3.5mm	2	up to 1.5mm ²	24V, 2A

1.2.3 Terminal assignment

Here the assignment of individual terminals and their affiliation to terminal blocks (Te block), terminal numbers (Te no.) and short description (T.desc.) as well as their electrical function and usage are explained.

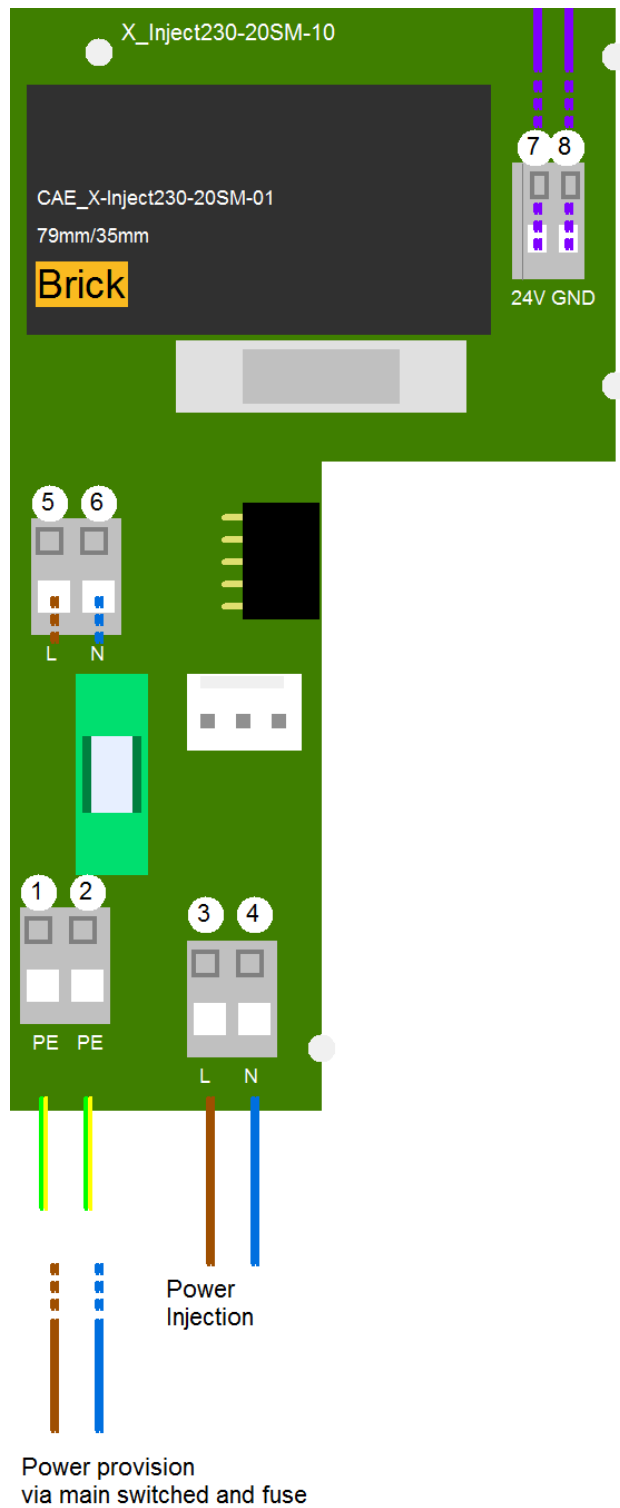
The associated mechanical and electrical properties are stated with the specific terminal block in the previous chapter. The position of a terminal is dedicated through the "Te block" and the actual terminal number (Te no.) or the terminal description (T.descr.) in the previous illustration respectively.

In the column "usage" the technical-/ device-functional use is listed.

Te block	Te no.	T. descr.	Function	Usage
Brick.TB01	1	PE	Protective earth	-
Brick.TB01	2	PE	Protective earth	-
Brick.TB02	3	L	Phase, Supply	-
Brick.TB02	4	N	Neutral, Supply	-
Brick.TB03	5	L	Phase, Consumer	-
Brick.TB03	6	N	Neutral, Consumer	-
Brick.TB04	7	+24V	Supply sourcing 24V DC for externals	-
Brick.TB04	8	GND	Ground	-

1.3 Input-/Output Scheme

The following diagram shows the adaptation of the control unit. To avoid overlapping, some wires are displayed interrupted and dashed.



1.4 Technical Data

1.4.1 Power Supply (injected from external)

The control unit requires the following electrical supply from external:

Description	Main Supply form external
Information	
Voltage	100 ... 240Vac
max. Current	5A AC (max.)
Inactive Current	30mA AC (Ruhe)
Frequency	50 ... 60Hz
Remark	external required fuse: max. 10A

1.4.2 Pulse Power Supply (provided to external)

The control unit provides the following electrical supply (for example to the sensor / actuator supply):

Description	Supply sourcing 230V AC for externals
Voltage	like incoming main supply
max. Current	5A AC
max. Power	nom. 1100VA
Remark	switched via power switch, reduced wit inductive load

Description	Supply sourcing 24V DC for externals
Voltage	24V DC
max. Current	600mA DC
max. Power	15W
Remark	

1.4.3 Fuses

The controller owns the following internal fuses for providing safety for the device and partially for the connected sensors/ actors:

ID	Type	Nom. Current	Characteristic	Usage
Brick.F01	Glas, 5x20mm	5A	delayed	Main Fuse

1.4.4 User Notes

- Blinking behavior StateLED:

Each Morse code is 3 seconds long!

not initialized = flashing continuously at approx. 5Hz

no communication = short-long-short

too little communication = short-short-short

disturbed communication = short-long-long

OK = continuous flashing at approx. 1Hz (0.6-1.5Hz)

1.5 History

On the following page you will find a list of changes that have been made to the product.

1.5.1 History

Date	Entry scope (HW, SWappl, SWapi, Release)	Entry type (Enhancement, Improvement, Bugfix, Release)	Version	Status (development, implemented, tested)	Responsible	Reason for the modification	Items of the modification	Impact for (end-)customer	Comment	location in model/source
xxxx-xx-xx		Release	0.99	tested	NSt					

For questions please contact:

emBrick GmbH	Alfred-Nobel-Straße 2 D-55411 Bingen am Rhein	+49 (0)6721-48035-70	https://www.embrick.de/ https://www.embrick.de/shop/ support@embrick.de
--------------	--	----------------------	---